

Japan's Submission to the CLCS

23 November 2009

PEMSEA Theme1 WorkShop3

Masahiro Akiyama

1 Japan as an Ocean State

- Land Area: 380,000 km²
 - (World's 60th -largest)
- Area of territorial sea and EEZ: 4,470,000 km²
 - (World's 6th-largest)
 - Number of remote islands: 6,847 islands
- Length of coastal line: 35,000 km
 - (World's 6th-longest)

2 Delineation of the outer limits of the continental shelf for Japan

- Survey and Analysis
- Drafting and Finalization
- Submission the information on its extended CS to the CLCS in November 2008
- Presentation to the CLCS in March 2009
- Examination by CLCS
 - Plenary
 - Subcommittee since September 2009
 - Plenary
- Recommendation

3 Areas of Japan's extended continental shelf

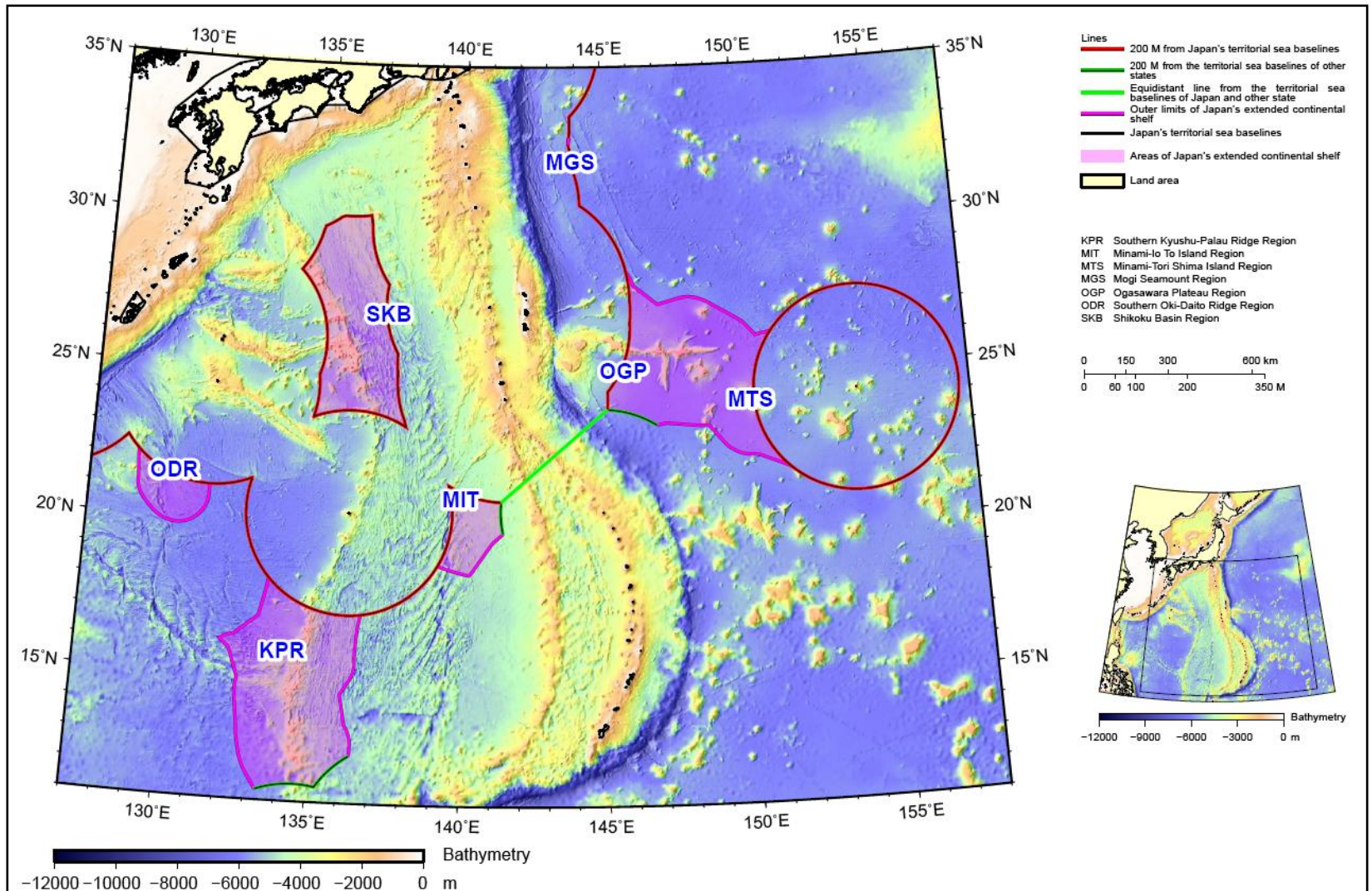


Figure 1.1. Areas of Japan's extended continental shelf

Japan's Executive Summary is available at UN DOALOS website;
http://www.un.org/Depts/los/clcs_new/submissions_files/submission_jpn.htm

4 Establishment of the outer limits of Japan's continental shelf beyond 200NM

- In Seven Regions
 - The Southern Kyushu-Palau Ridge Region (KPR)
 - The Minami-Io To Island Region (MIT)
 - The Minami-Tori Shima Island Region (MTS)
 - The Mogi Seamount Region (MGS)
 - The Ogasawara Plateau Region (OGP)
 - The Southern Oki-Daito Ridge Region (ODR)
 - The Shikoku Basin Region (SKB)
- Those areas cover:
 - 740,000 km²
- Specific provisions of article 76 invoked to support the submission
 - Para 4(b)
 - Para 4(a)(ii)
 - Para 5
 - Para 7
- Potential overlap on relevant maritime delimitations
 - The United States of America
 - The Republic of Palau
- Relevant state bodies
 - MOFA/MEXT/METI/JCG
 - JAMSTEC/AIST/JOGMEC

5 Some Discussions

- The potential overlap
 - The United States of America
 - The Republic of Palau
- Note verbale
 - From China (February 6, 2009)
 - From the Republic of Korea (February 27, 2009)
- Note submitted by Japan
 - To the preliminary information by China (July 23, 2009)
 - To the preliminary information by the Republic Korea (May 26, 2009)