



Sulu-Sulawesi: regional sea governance and good practices

Dir. Theresa Mundita S. Lim

Department of Environment and Natural Resources, Philippines
Chair, Tri-National Committee for Sulu-Sulawesi Marine Ecoregion

Romeo B. Trono and Evangeline F.B. Miclat

Conservation International (CI)-Philippines

East Asian Seas Congress, Manila, Philippines

23-27 November 2009



Outline

Background on Sulu-Sulawesi tri-national cooperation

**Tri-National Committee for Sulu-Sulawesi Marine
Ecoregion (SSME)**

**Functionality of the governance in project development
and implementing joint actions**

**Good practices in transboundary governance and
partnership**

Background:

The Sulu-Sulawesi Marine Ecoregion (SSME)

- One biogeographic unit in the center of marine biodiversity
- 3 countries: Indonesia, Malaysia, Philippines
- 1 million sq kilometers
- >40M human population; at least 50 cultural groups
- Productive coastal and marine ecosystems
- Global economic importance: fisheries, tourism, transportation



Background: The SSME Tri-National Initiative

- 2001 – **One VISION:** biodiversity conservation, sustainable development and joint management
- 2002 – Fisheries Management Framework
- 2002 – BIMP-EAGA recognition
- 2002 – Framework for a Network of Marine Protected Areas
- 2003 – **One Plan:** Stakeholders' Ecoregion Conservation Plan (ECP)
- 2004 – ASEAN recognition
- 2004 – Tri-national MOU on ECP implementation signed; ratified in 2006
- 2006 – **Governance:** Tri-National Committee for SSME to implement the MOU

Our Vision...

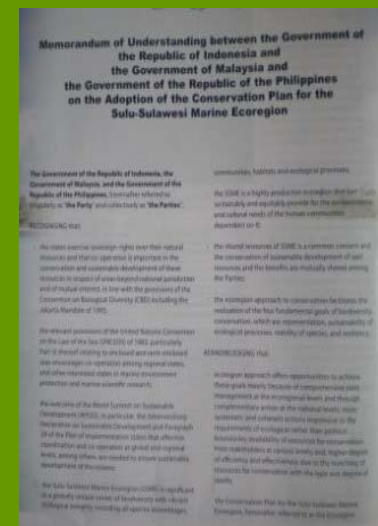
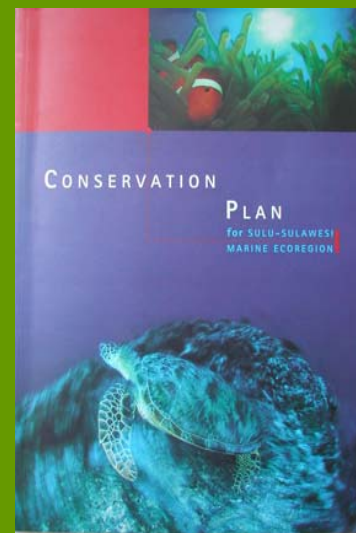


BIODIVERSITY VISION
for the
Sulu-Sulawesi Marine Ecoregion

A marine ecoregion that remains to be globally unique & a center of diversity with vibrant ecological integrity, harboring representative species, assemblages, communities, habitats, and ecological processes.

A highly productive ecoregion that sustainably and equitably provides for the socio-economic and cultural needs of the human communities dependent on it.

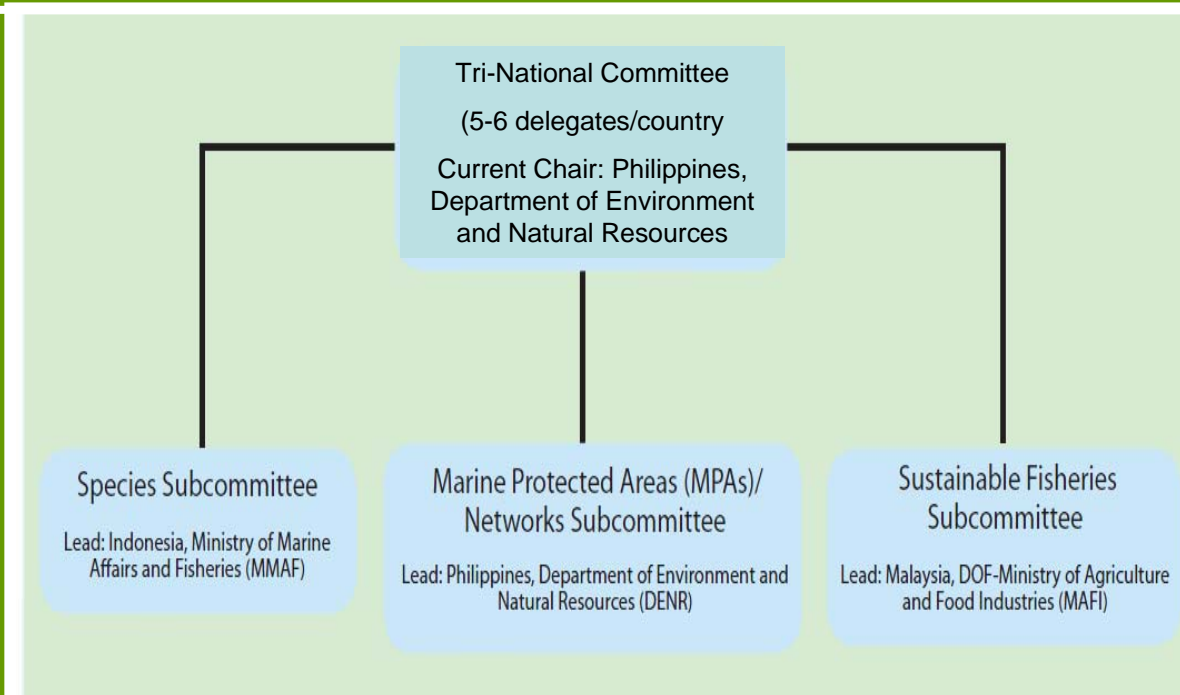
An ecoregion where biodiversity and productivity are sustained through generations by participatory and collaborative management across all political and cultural boundaries.



Tri-National Committee for SSME: a functional governance

Country-level governance:

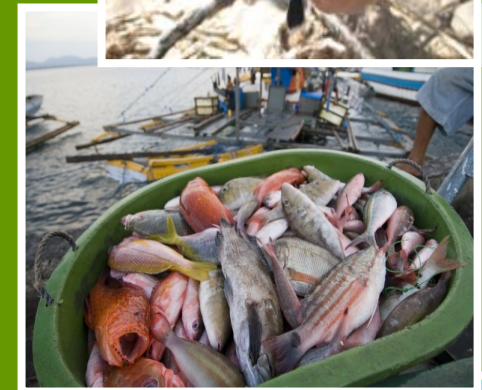
- **Indonesia:** Technical Working Group and National Committee for SSME [Ministry of Marine Affairs and Fisheries (MMAF) - Lead and Head of Delegation, Ministry of Environment, Ministry of Forestry, Ministry of Foreign Affairs, World Wide Fund for Nature]
- **Malaysia:** Technical Working Group for SSME [Department of Fisheries (DOF)-Sabah, Ministry of Agriculture and Food Industries (MAFI) - Lead and Head of Delegation, Ministry of Environment, Ministry of Tourism and Culture, Sabah Parks, Sabah Wildlife Department, Fisheries Department-Malaysia, University of Malaysia Sabah, Sabah Forestry Department, World Wide Fund for Nature]
- **Philippines:** Philippine Presidential Commission for the Integrated Conservation and Development of Sulu-Celebes Seas or PCSCDSCS [Department of Environment and Natural Resources (DENR) - Lead and Head of Delegation, Department of Agriculture-Bureau of Fisheries and Aquatic Resources, Autonomous Region of Muslim Mindanao, Philippine Council for Aquatic and Marine Research and Development (PCAMRD), Presidential Adviser on Mindanao Affairs, World Wide Fund for Nature, Conservation International, Department of Foreign Affairs]



Source: Updated from Miclat and Trono, 2008

The Tri-National Committee for SSME: a functional governance

- 3 sub-committees:
 - Threatened, Charismatic and Migratory Species; Lead: Government of Indonesia, Min. of Marine Affairs and Fisheries
 - Sustainable Fisheries; Lead: Government of Malaysia, Min. of Agriculture and Fisheries Industry (Dept. of Fisheries-Sabah)
 - Marine Protected Areas and Networks; Lead: Government of the Philippines, Dept. of Environment and Natural Resources
- Terms of Reference and work plans approved by the Tri-National Committee



The Tri-National Committee for SSME: a functional governance

- Annual meetings of sub-committees:
 - Progress of countries in implementing actions on species protection, networks of MPAs and sustainable fisheries
 - Issues, opportunities and recommendations to Tri-National Committee
- Annual meetings of the Tri-National Committee:
 - Progress of countries in implementing the SSME Conservation Plan
 - Progress of sub-committees in implementing Action Plans
 - Transboundary issues, emerging opportunities, action points



Functionality of governance in pursuing joint projects

The Sub-Committee on Sustainable Fisheries demonstrates functionality of SSME governance in pursuing tri-national project.

- **Project:** Sulu-Celebes Sea Sustainable Fisheries Management , 2009-2013
- **Funding:** GEF=\$2.975M, co-financing=\$3.33M
- **Program:** Regional Coral Triangle Initiative (CTI)
- **Partnership:** Fisheries Sub-Committee, CI and UNDP
- **Project management:** Philippines, Bureau of Fisheries and Aquatic Resources, Dept. of Agriculture
- **Components:** 1) Transboundary Diagnostic Analysis, 2) Strategic Action Program, 3) Institutional strengthening, 4) Demonstration sites for fisheries management

Sulu-Celebes (Sulawesi) Sea Sustainable Fisheries Project

- Regional relevance
 - 1ST tri-national project/1st GEF project in SSME
 - SSME Conservation Plan fisheries objective
 - Work plan of the SSME Fisheries Sub-Committee
 - SDS-SEA
 - Priorities of the BIMP-EAGA (Natural Resources Development Cluster)
 - CTI goal on ecosystem approach to fisheries management (EAFM)
 - Complements other transboundary fisheries projects, e.g. oceanic tuna

Functionality of governance in implementing joint actions

The Sub-Committee on Species

- **Focus:** marine turtles
- **Highlights:** science-based Action Plan for Sea Turtle Conservation in Sulu-Sulawesi and Design of Network of Sea Turtle MPAs (in partnership with Marine Research Foundation, Malaysia); for publication
- **Additional priorities:** Napoleon wrasse, marine mammals, sharks

The Sub-Committee on MPAs

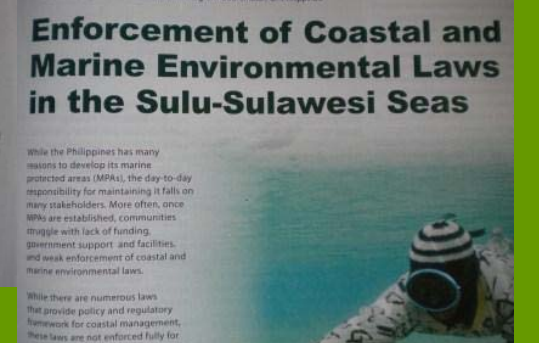
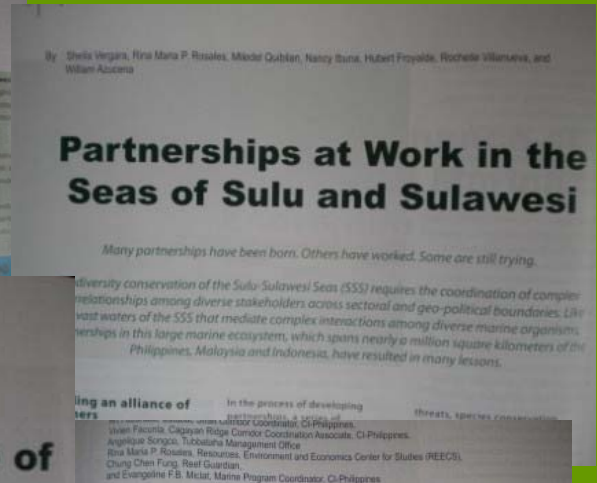
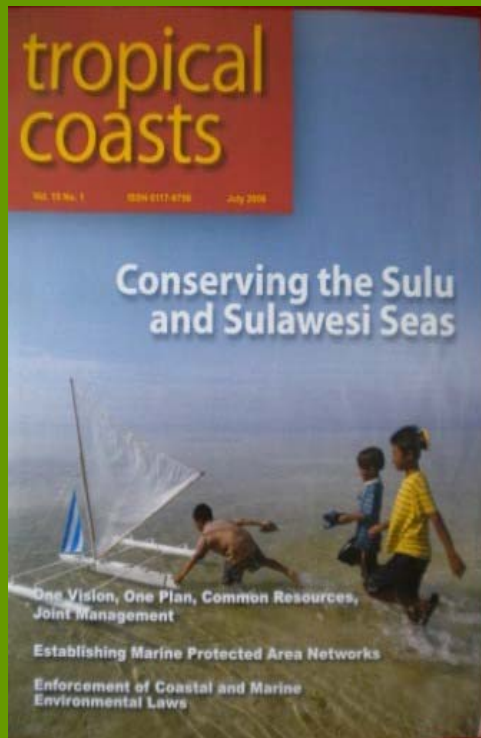
- Review of protocols for MPA networking i.e. ecological, institutional
- Adoption of good management practices, e.g. MPA Awards of the Philippine MPA Support Network (MSN)
- Sharing of experience, e.g. Sulu-sulawesi case in ASEAN guidelines for transboundary protected area, ASEAN Center for Biodiversity (ACB)

Functionality of governance in generating support and partnership

- Action Plans of the SSME Sub-Committees published
 - Planned joint activities in species protection, networks of MPAs and sustainable fisheries
 - Strategies, accomplishments of sub-committees, lessons learned
 - Publication support from USAID Coral Triangle Support Partnership (CI-TNC-WWF) and CI Sulu-Sulawesi Seascape Project with Walton Family Foundation
 - Launch at Side Event, 3rd EAS Congress, November 24

Partnerships at work: building awareness and communicating results

- Sulu-Sulawesi Publications (partnership with PEMSEA)



Good practices in governance and partnerships in SSME

- Governance has legal personality
- Adheres to ASEAN practices; employs consensus-building approaches
- Multi-stakeholder engagement and adherence to SSME Vision
- Strong government-NGO commitment and cooperation, with governments in the lead roles
- Promotes sharing of knowledge and experiences and pursues capacity-building activities
- Adopts and scales up effective ground initiatives to national and tri-national levels
- Fosters ownership of member countries, with each country acting as Secretariat and Chair for every three years

Good practices in governance and partnerships in SSME

- Partnership endeavors to implement plans of action
- Sustains tri-national cooperation by harnessing resources of member agencies and organizations
- Develops a model for three-country project development to implement joint actions
- Orchestrates efforts to gain attention of potential partners and secure support through complementation of resources and activities, e.g. GTZ, BIMP-EAGA, ASEAN bodies, UN organizations, WB, ADB, USAID, EU
- Shares knowledge and experience in transboundary cooperation to replicate good practices, e.g. GEF IW-Learn, ACB, WCPA, PEMSEA

Good practices in governance and partnerships in SSME

- Maximizes opportunities to promote tri-national cooperation in international fora to secure support e.g. 2nd EAS Congress instrumental in securing GEF project for sustainable fisheries management
- Relevant oral presentations – 3rd EAS Congress:
 - (T3) Nested MPA Networks in Indonesia by Min. of Marine Affairs and Fisheries
 - (T3) Community-based biodiversity threats analysis and mapping of the Balabac Strait Corridor, Palawan, Philippines by Palawan State University
 - (T5) Tourism in changing climate by C. Libosada
- Sulu-Sulawesi Seascape Exhibit (CI)

Good practices in governance and partnerships in SSME

- Maintains relevance of SSME by linking with regional programs and initiatives for complementation
- Tri-National Committee Resolution re: SSME-CTI functional linkage to CTI Senior Officials Meeting in October 2009



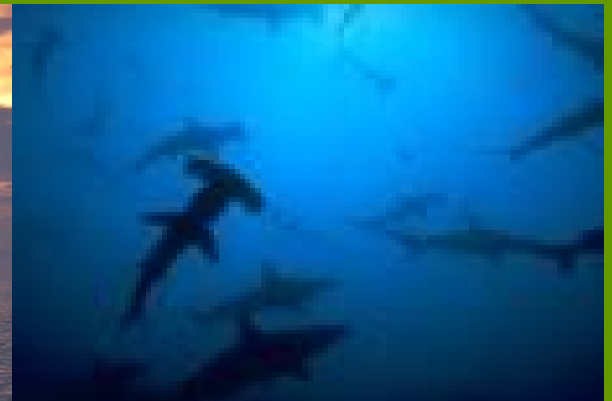
SSME is 1st seascape recognized in the CTI Regional Plan of Action

- Respect for political sensitivities





SSME cooperation spirit is strong and getting stronger





SSME cooperation spirit is strong and getting stronger

Maraming Salamat

Terima Kasih