

Moreton Bay Marine Park

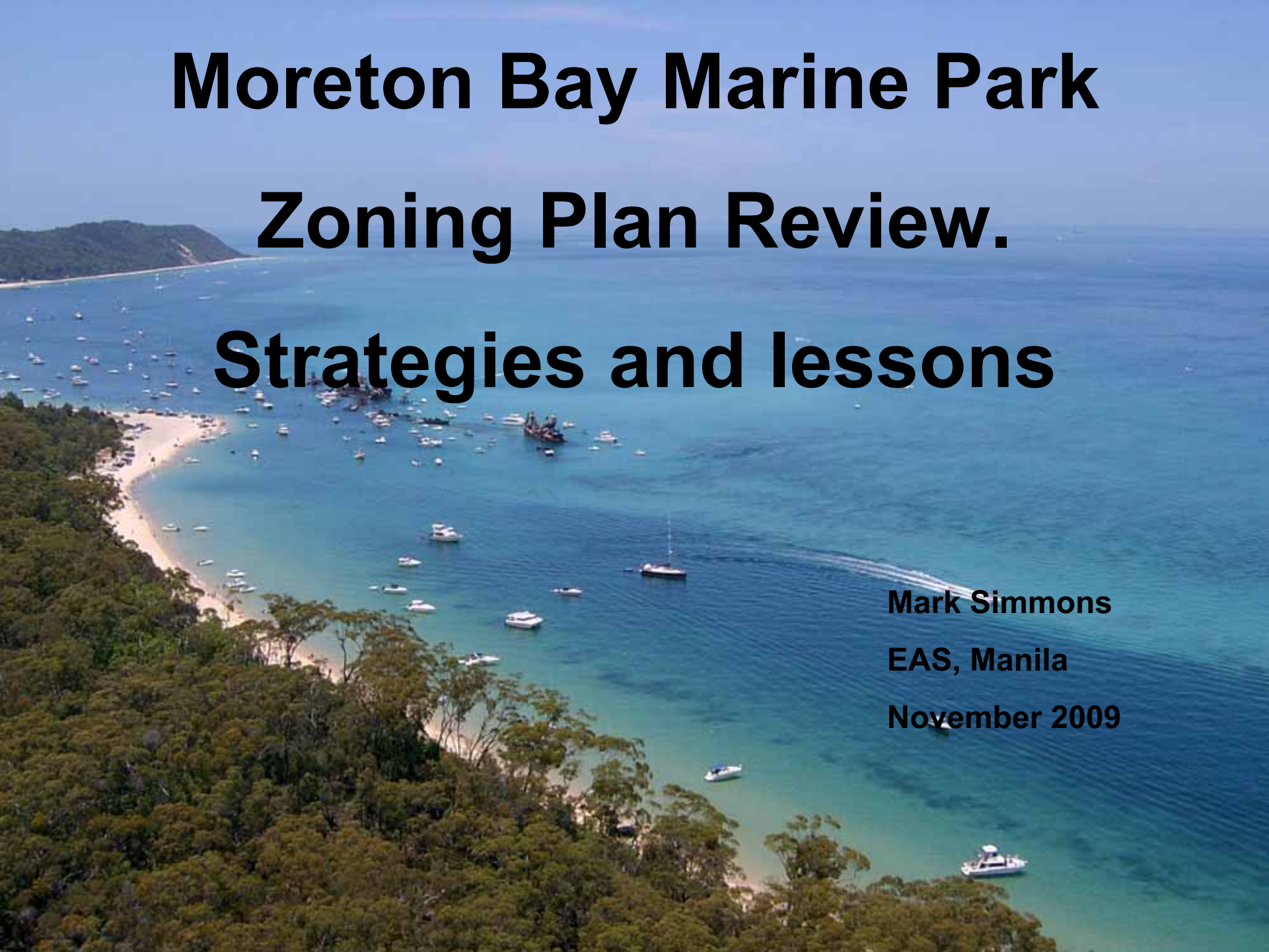
Zoning Plan Review.

Strategies and lessons

Mark Simmons

EAS, Manila

November 2009



**GREAT
BARRIER
REEF
MARINE
PARK**

Queensland

Cairns

Townsville

Rockhampton

Moreton Bay Marine Park

Brisbane



AUSTRALIA



Diverse species & habitats

- Over 750 species of fish
- Over 355 invertebrate species
- Over 120 species of coral offshore and over 40 species of coral inshore
- 6 of the world's 7 species of marine turtles
- Highest abundance of dugongs in Australia
- Grey nurse shark
- Migratory species including humpbacks
- 32 species/50 000 shorebirds visit annually



Economic value

- Major tourist attraction
- 12% of State's total commercial fish catch
- One third of State's recreational fishing
- Australia's fastest growing shipping port
- Generates:
 - Tourism: ~\$500 million per annum (2006)
 - Commercial fishing: ~\$24 million per annum (2006) value of landed catch
 - Rec fishing: ~\$194 million per annum (2000-2001) total associated expenditure
 - Aquaculture: ~\$15 million per annum (2005-06)



Reason for the review

- Previous Zoning Plan expired 1st September 2008
- Changes in patterns and levels of use over last 10 years
- Increased scientific knowledge of marine systems
- Helps meet State, National and International environmental commitments



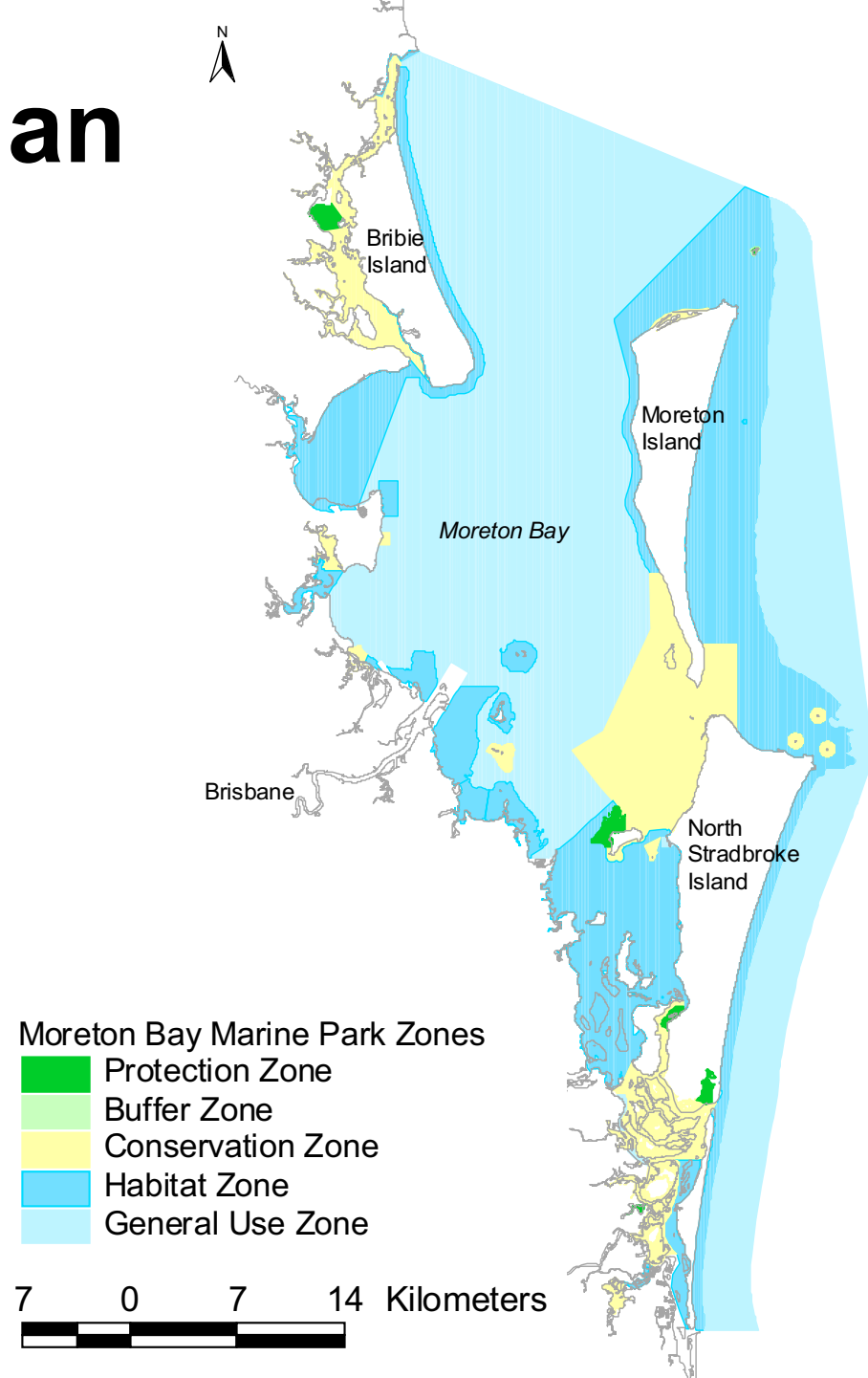
Objectives of the review

- To protect the biodiversity values of Moreton Bay Marine Park
- To ensure sustainable use of the Marine Park, now and in the future



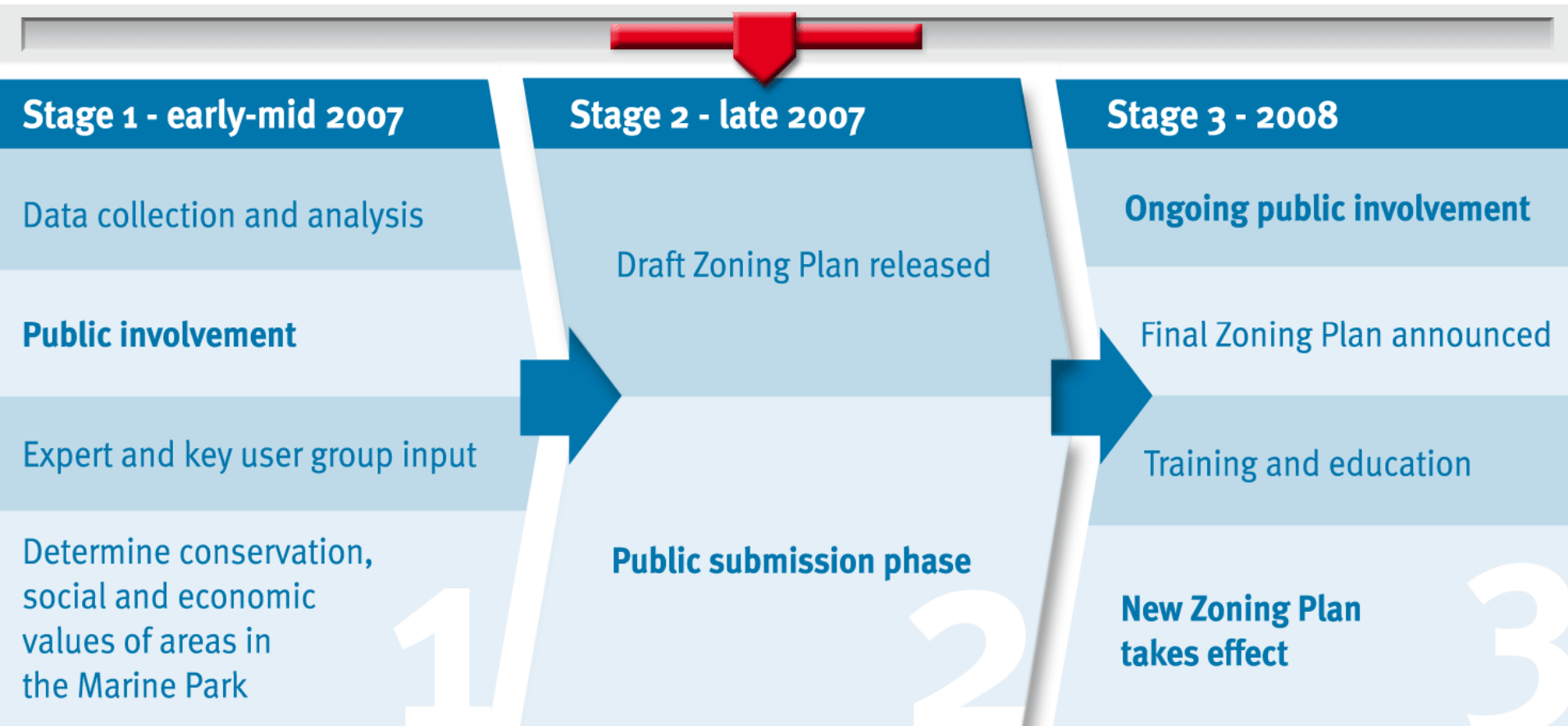
Previous Zoning Plan

- Approx. 3,400km²
- Allows for multiple use
 - General use area: 61%
 - Habitat zones: 27.5%
 - Conservation zones: 11%
 - Buffer zones: 0.01%
 - **Protection zones: 0.5%**



Timeline for the review

we are here



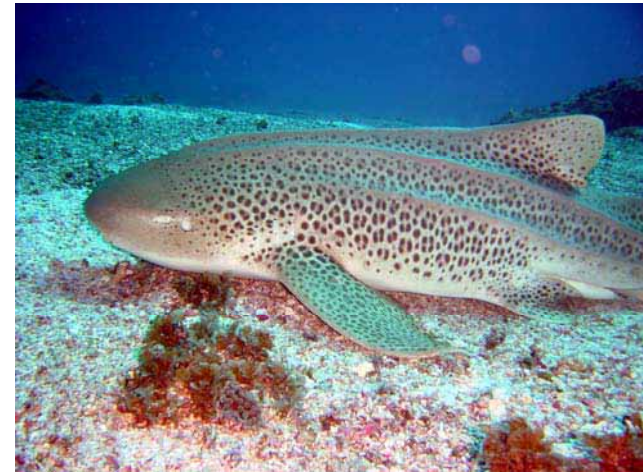
Information is critical

- Information about how people use and value the marine park was an essential component of the first stage
- Information is needed to make well informed decisions
- Important user information could not be incorporated if it is not known



Existing data sets

- Information from around 200 data sets, for example:
 - Habitat types & distribution
 - Species distribution
 - Strandings database
 - Water quality
 - Cultural heritage sites
 - National Parks & estates
 - Shipwrecks
 - Native Title claims
 - Boat ramps & anchorages
 - Canal estates
 - Treatment plants
 - Commercial fishing effort
 - Recreational fishing effort
 - Aquaculture
 - Fishery closures & FHAs

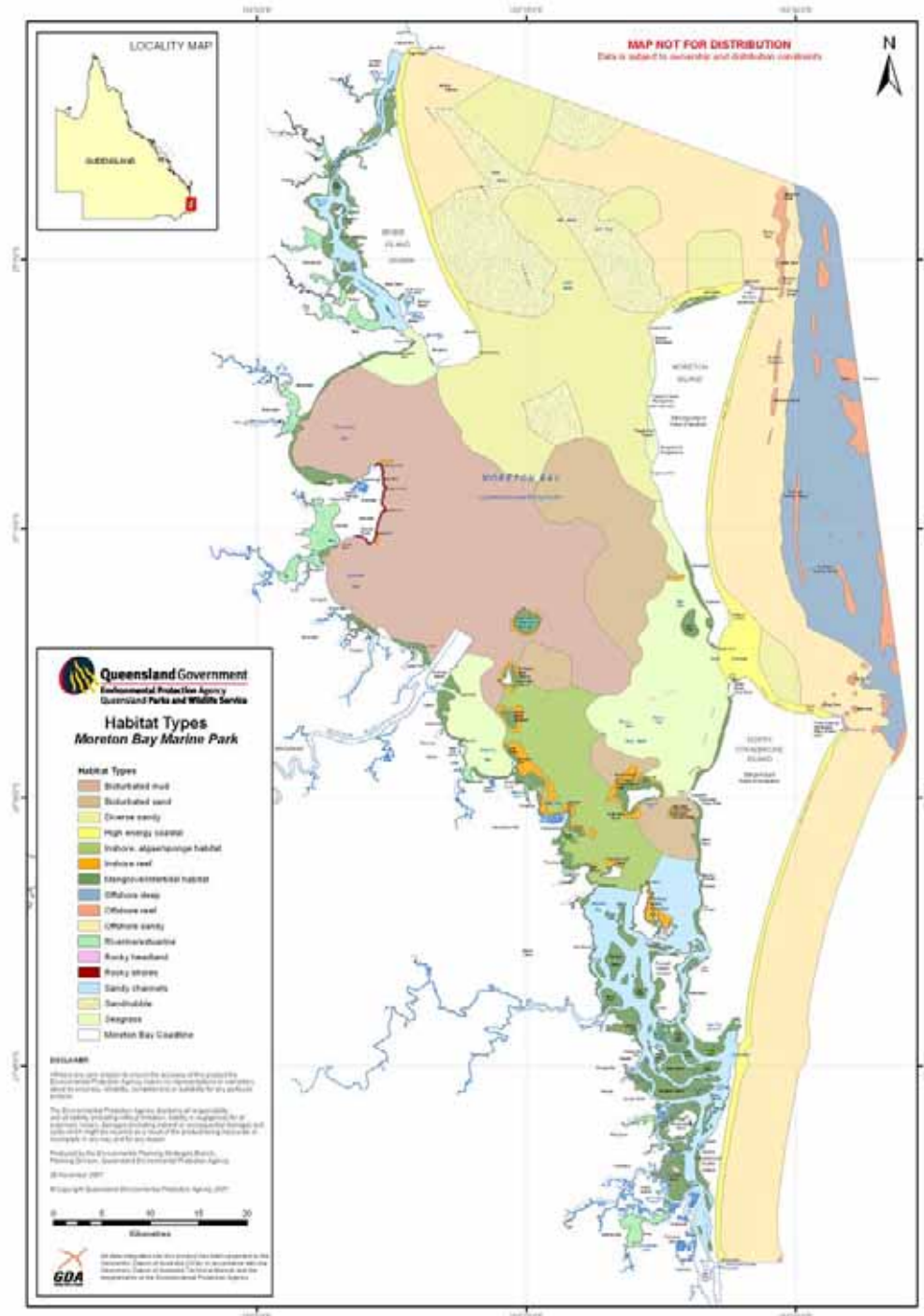


Habitat overlay

16 broad-scale habitat types were classified

Habitat mapping carried out by Tim Stevens & Rod Connolly (Griffith University);

- Geoscience Australia (geomorphic habitats);
- EPA acquired datasets (incl. seagrass, mangroves etc);
- Offshore habitat mapping carried out by WBM Consultancy



Socio-economic and cultural overlay

Uses and their values

- Shipping channels, boat ramps, navigational aids, ferry routes, dredge disposal sites, port limits etc
- Tourism, boating, fishing, diving etc
- Cultural sites, native title, shipwrecks etc



Scientific Guiding Principles

Biophysical and socio-economic

- Expert Advisory Panel's independent advice
- Advice based on knowledge of Moreton Bay Marine Park and best practice for marine reserve design
- Principles adopted international mandates (CBD) and national approaches (NRSMPA)
- Developed 13 principles (biophysical & socio-economic)

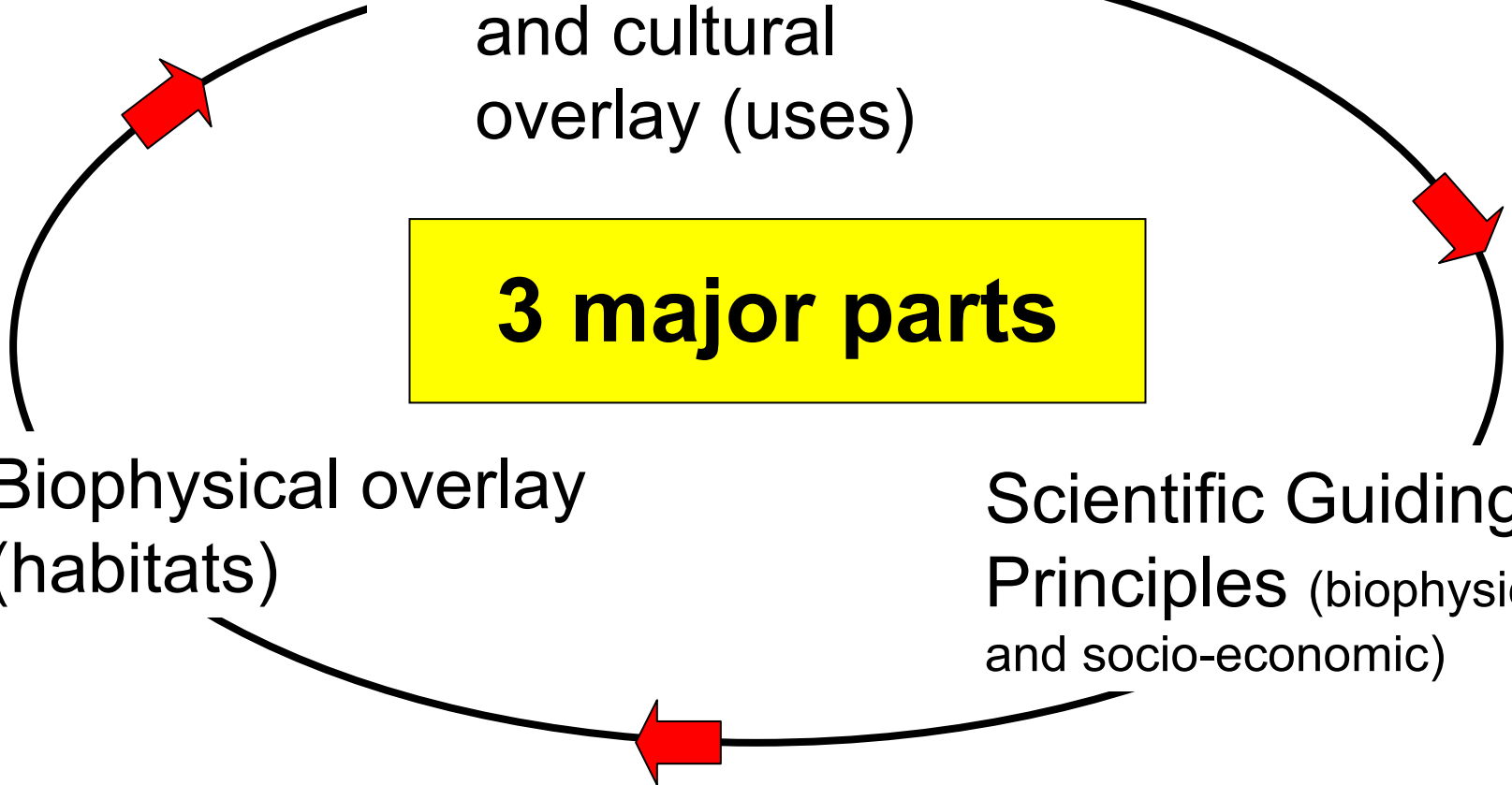
Analysis package

Socio-economic
and cultural
overlay (uses)

3 major parts

Biophysical overlay
(habitats)

Scientific Guiding
Principles (biophysical
and socio-economic)



Consultation

- Consultation with scientists, key stakeholders, industry and community was conducted throughout the review process
- How?
 - Expert Advisory Panel
 - Stakeholder Reference Group
 - Targeted stakeholder meetings
 - Public information sessions
 - Mail outs
 - Web information
 - On-line survey



Get involved – Have your say

Closing date for feedback: 7 March 2008

Have your say about the Moreton Bay Marine Park draft zoning plan. Your submission will inform development of the final Moreton Bay Marine Park zoning plan. The final zoning plan is expected to be released in late 2008

Online: www.epa.qld.gov.au/moretonbay

Freecall: 1800 105 789

Email: moreton.bay@epa.qld.gov.au



Representation of habitat types in green zones under the previous zoning plan compared to the new zoning plan

Habitat type	Percentage in green zones	
	Previous zoning plan	New zoning plan
Bioturbated mud	0.0	10.00
Bioturbated sand	0.0	14.20
Diverse sandy	0.0	14.60
High energy coastal	0.0	18.80
Inshore reef	10.7	21.90
Inshore, algae/sponge habitat	0.0	<i>5.90</i>
Mangrove/intertidal habitat	3.6	19.20
Offshore deep	0.0	<i>8.40</i>
Offshore reef	0.4	<i>9.90</i>
Offshore sandy	0.0	16.50
Riverine/estuarine	0.8	22.30
Rocky headland	0.0	18.40
Rocky shores	0.0	10.10
Sand/rubble	0.0	28.70
Sandy channels	3.4	<i>9.40</i>
Seagrass	0.0	15.20

Other initiatives

Monitoring program

- QLD govt has committed to monitoring over 5 years
- A partnership approach will be adopted
- Assess the effectiveness of zoning (ecological & social)

Structural Adjustment Package

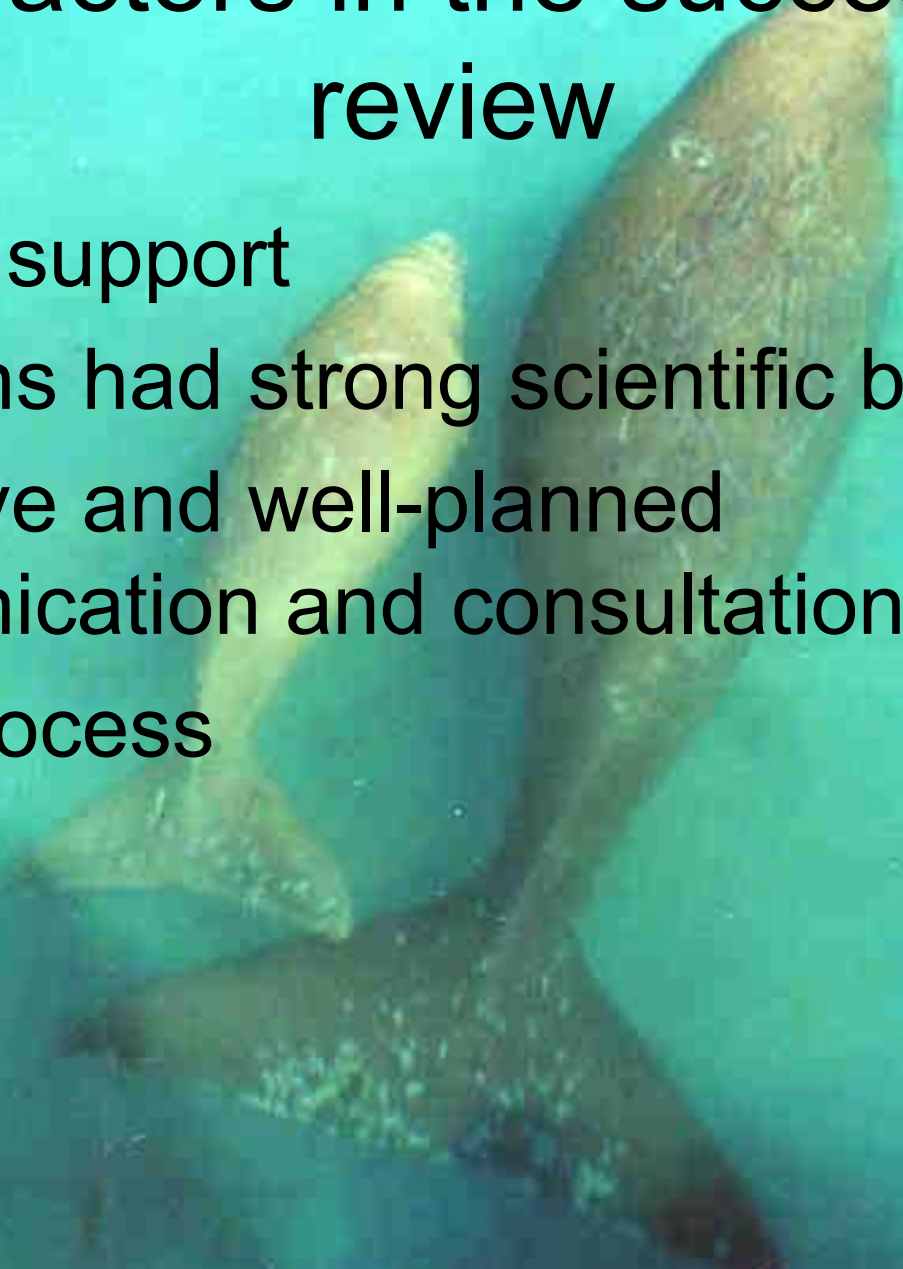
- QLD govt has allocated \$14 million
- Minimise cost of zoning to commercial fishing sector
- Competitive offer process

Artificial reef program

- QLD govt allocated \$1 million
- Research, planning, construction of a trail program
- Provide alternative sites to recreational fishers

Critical factors in the success of the review

- Political support
- Decisions had strong scientific basis
- Extensive and well-planned communication and consultation
- Clear process



The politics

- **Minister and advisers were considered a key stakeholder group**
- **‘No surprises’ policy**
- **Ensured ongoing support**



Moreton Bay fishing bans anger boaties

by DANIEL HURST

A FISHING lobby group says a plan to ban angling in 15 per cent of Moreton Bay could discourage boaties from dropping a line in the Bay.

But the State Government's marine protection plan has been attacked by environmentalists for the opposite reason – they say

the proposal does not go far enough.

The draft rezoning plan for the Moreton Bay marine park was released on Sunday for public comment, reigniting debate between fishing and environmental groups over how much protection is needed to preserve the Bay for future generations.

Existing no-fishing green zones cover less than one per cent of the Bay, including water to the north-west of Peel Island and pockets to the south of North Stradbroke Island.

The new proposal suggests green zones should cover 15 per cent of the marine park including various sites around North

Stradbroke Island and some of the smaller islands in the southern part of Moreton Bay.

Premier Anna Bligh said people would always be able to fish from jetties, rock walls, marinas and other spots "including the vast majority of beaches that fringe Moreton Bay".

Continued page 2

Greenies say bay bans don't go far enough

By Daniel Hurst

A REDLAND environmentalist has declared that boaties have "nothing to worry about" with planned fishing bans in Moreton Bay.

The comments from Wildlife Preservation Society spokesman Simon Baltais came after fishing and seafood industry groups blasted the State Government's marine conservation plan as "overkill".

The proposed rezoning, which would see fishing banned in 15 per cent of the Moreton Bay marine park, has been released for public comment before the final plan takes effect late next year.

Labor Member for Cleveland Phil Weightman has urged the

community to have its say on the draft.

"The plan provides a good balance between the need to protect the biodiversity of our wonderful Moreton Bay, while minimising impact on bay users," he said.

Mr Baltais said fishing groups that had criticised the plan were engaged in "old ways" of thinking.

He said the Bay's existing protection – less than one per cent in green zones – was "lousy" and the proposed new plan was "still not good enough".

But Moreton Bay Seafood Industry Association Chief Kellie Williams said it was a myth that green zones were the only form of protection over the Bay.

Ms Williams, who described the zoning plan as "really disappointing", said a quarter of the Bay was already off-limits to trawling and the new protections would create further restrictions.

Mr Baltais called for expanded green zones, saying it was important to properly protect habitats such as the Amity Banks area north of Peel Island, where a variety of marine creatures feed on a large seagrass bed.

"It's got the only dugong population next to a major capital city, it supports the largest resident bottle-nose dolphin population and the highest aggregation of green turtles," he said.

The Government's draft plan places a green zone over much of this

area, but the document says the green zone does not extend further east so the impact on recreational fishing and commercial operations is minimised.

Ms Williams, who is also a member of the Moreton Bay Access Alliance, said the group's own rezoning proposal was better than the Government's plan because it focused on better preserving important habitat types.

Mr Weightman said 70 per cent of the green zones proposed by the Access Alliance had been included in the Government's plan.

HAVE YOUR SAY:

- Read the plans at www.epa.gov.au or phone 1800 105 789 for a copy.
- Make a submission by March 7, 2008.



MORETON BAY PLAN

SITES earmarked for fishing bans include:

- Cox Bank, at the mouth of Eprapah Creek, north of Point Halloran;
- Pannikin Island, east of Point Talburpin;
- Amity Banks, west of North Stradbroke Island;
- Myora Reef, north of Dunwich;
- Wanga Wallen Banks, on the western side of

North Stradbroke Island south of Amity Point;

- Flat Rock, north of Point Lookout;
- An off-shore stretch of ocean east of North Stradbroke Island.

How to have your say

- Read the plans at www.epa.gov.au or phone 1800 105 789 for a copy.
- Make a submission by March 7, 2008.



DROP 'EM A LINE: The community has been urged to have its say on the State Government's draft plan to ban fishing in 15 per cent of Moreton Bay. Environmentalists and fishing groups disagree on how much protection is needed. Photo: Charles Sonnex

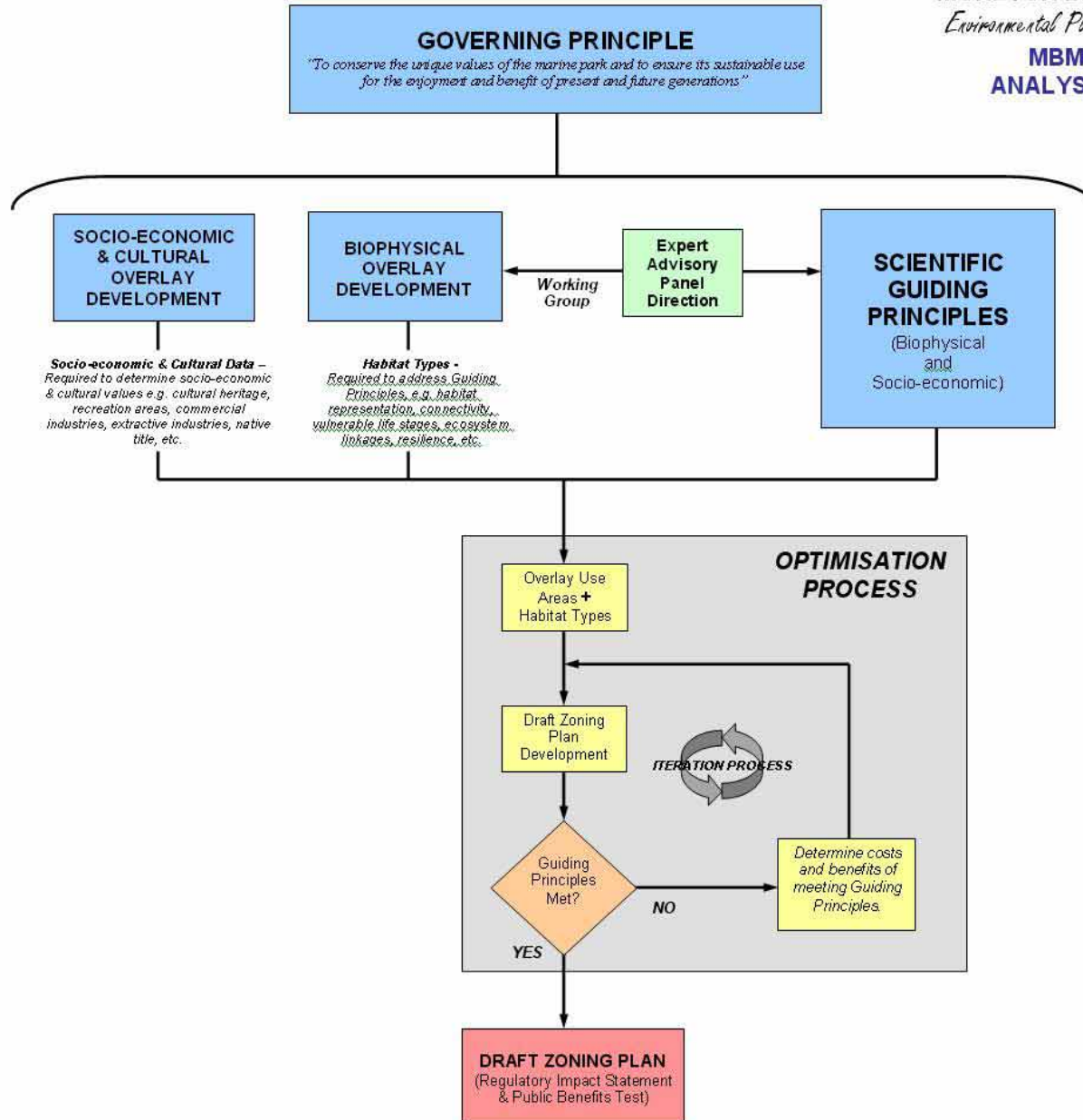
Analysis method

MORETON BAY MARINE PARK ZONE REVIEW

Environmental Planning Strategies Branch, Planning Division

MBMP ZONING PLAN REVIEW

ANALYSIS METHOD – 12th June 2007



CAR approach

Efficient approach

- **Comprehensive:** includes the full range of habitat types in no-take areas recognised at an appropriate scale
- **Adequate:** protects enough to maintain the ecological viability and integrity of populations, species & communities
- **Representative:** ensures that the examples of each biodiversity feature included in no-take areas are typical of that feature

➤ focusing on no-take areas

- Meet conservation goals while minimising the impact on other users
- Be compact, not fragmented, to ensure efficient management & enforcement

➤ focusing on all zoning

Terms of Reference

The Panel will provide advice to the EPA on scientific issues and priorities that will enhance the ecological sustainable use of Moreton Bay Marine Park (MBMP). Specifically, the Panel will provide advice on the following:

- 1. The adequacy and quality of data sets (and any information gaps) for management of MBMP.**
- 2. Spatial description of the marine biodiversity (based on existing data sets) of the MBMP.**
- 3. The biophysical operating principles and socio-economic operating principles which provide guidance to ensuring ecological sustainable use of the MBMP.**
- 4. The adequacy of existing protected areas, the identification of any candidate areas for inclusion in a system of highly protected areas within the MBMP and an assessment of the biodiversity risks associated with failing to provide adequate protection.**
- 5. The integrity of the scientific methods and outputs proposed in the review of the MBMP.**

Community consultation

- Mail out
- Community display days
- Boat shows
- On-line survey
- Face to face meetings
- Expert Advisory Panel
- Stakeholder Reference Group
- Information sheets
- Display posters



Community Display Days

- Held at a number of regional venues
- Teams of operational and planning staff
- Expertise across all aspects of planning

Face to face meetings

- Peak bodies
- Stakeholder groups
- Ongoing meetings

Draft Zoning Plan document

- Regulatory Impact Statement
- Public Benefits Test
- Basis for Zoning decisions
- Boundary descriptions
- Habitat types
- Scientific Guiding Principles
- National/International obligations